



Ara whakuru me ngā Ara whakapiki

Starter & Pathway Courses



Dual Enrolment

Learn with us while you're still at school.

If you're in Years 11 to 13 at secondary school, Dual Enrolment courses are a way to experience tertiary study while still at school. You spend a day or two at Ara | Te Pūkenga and the rest of the week at school. It's a great opportunity to earn NCEA credits and get a head start in a subject you want to study when you leave school.

Dual Enrolment



Level 1 - 3



Christchurch, Timaru*



Part-time: one year



February

** Some courses are available in Christchurch only or Timaru only*



We offer the following Dual Enrolment courses:

Business & Digital Technology

- New Zealand Certificate in Business (Administration & Technology)

Creative Arts

- Digital Design

Hospitality, Business & Service Industries

- Hospitality Supported Learning
- Hospitality, Cookery and Beverage
- Cookery and Restaurant Service
- Barista Hospitality Pathway
- Baking
- Cookery
- Introduction to Beauty Therapy
- Introduction to Barbering
- Salon Skills
- Beauty Therapy and Hairdressing

Language, Education and Sustainability

- Sustainability and Outdoor Education

Trades

- Introduction to Automotive
- Introduction to Automotive Engineering
- Introduction to Automotive and Engineering
- Introduction to Construction Trades
- Introduction to Electrical Engineering
- Introduction to Engineering
- Introduction to Plumbing
- New Zealand Certificate in Construction Trade Skills (Carpentry)

Youth Guarantee


Discover your path with a free course.


If you're aged between 16 and 24 and not in school, employment or any other training, a Youth Guarantee course is the smart way to get ahead. Free and available in a wide range of subjects, these courses set you up with great foundation skills for employment or further study, and enable you to make confident decisions about your future.

Youth Guarantee

 Level 2 – 3

 Christchurch, Timaru*

 Full-time: six months

 February, July*

We currently offer these Youth Guarantee courses:

Business

- New Zealand Certificate in Business (Administration and Technology)

Hospitality & Service Industries

- New Zealand Certificate in Salon Skills (Introductory)
- New Zealand Certificate in Hairdressing (Salon Support)**

Trades

- New Zealand Certificate in Foundation Skills (Introduction to Automotive Engineering)
- New Zealand Certificate in Foundation Skills (Construction)

New Zealand Certificate in Foundation Skills (Electrical Engineering)

**Not all courses are available at both locations, or in both semesters. Please contact us for exact details.*

***One year duration*



Experience Ara

Get a feel for tertiary level study, explore an industry you're interested in or just try something new.

Experience Ara gives you the chance to do all of that and more, with taster days, short courses, holiday programmes, information sessions and lots of other cool stuff for students in Years 9-13.


Check out what's on offer at:
ara.ac.nz/exp

Visit ara.ac.nz for all entry requirements and fee information.


Supported Learning


Prepare for study, employment and independent living.

New Zealand Certificate Skills for Living (for Supported Learners)

 Level 1

 Christchurch

 Full-time: one year

 February

Gain skills to assist you to be a productive citizen of Aotearoa.

As well as learning how to self-manage your participation in social, cultural, family/whānau and community situations, this course will support you to seek further skills and knowledge to improve your educational and employment pathway. Once you've completed the four core courses in the first year, you can return for another six months to study two additional courses which will give you specific skills for the workplace.




Skills for Working

 Level 1

 Christchurch

 Full-time: six months

 February


Prepare to enter the workforce with confidence.


This programme is designed as a follow-on from the Skills for Living certificate. It has two courses - Getting and Keeping a Job and On the Job Experience - which will prepare you to find meaningful work in the community.

Preparation for Study for Supported Learners

 Level 1

 Christchurch

 Part-time: 10 weeks per course

 February

Add to your skillset with a part-time supported learning course.

This programme is designed to ease your transition from secondary school to a tertiary education environment. It comprises four courses: Communicating with Others, Keeping Yourself Safe, Emotions and Life Lessons, and Preparing for Independence.




Foundation courses

Give yourself the best start for further study or your next step in life.

New Zealand Certificate in Foundation Studies (Trades pathways)

 Level 2

 Christchurch

 Full-time: 19 weeks
Part-time: available

 February, July


Take the first step towards a career in trades.


This foundation qualification is specifically designed as a stepping stone to further study. It's available in three strands: Building and Construction, Electrical Engineering and Automotive Engineering.




New Zealand Certificate in Study and Career Preparation

 Level 3 and Level 4

 Christchurch, Timaru*

 Full-time: 19 weeks
Part-time: available

 February, July

Get ready for higher-level study in your chosen subject area.

If you don't meet the entry requirements for a diploma or degree, or if you want to improve your academic skills before moving on to higher-level study, this qualification is the perfect solution. It's available in a range of pathways to ensure you meet specific entry requirements for your chosen degree or diploma, and it'll give you the academic skills and confidence you need to take that next step in your learning journey.

The certificate has specific pathway options for:

- Animal Care/Veterinary Nursing
- Architectural Studies
- Broadcasting
- Business
- Construction Management/Quantity Surveying
- Digital Technologies
- Engineering
- Health (Nursing, Midwifery, Medical Imaging, Osteopathy)
- Laboratory Science
- Massage Therapy
- Social Work/Support Work
- Sport Science, Nutrition, Health Promotion
- Tourism/Hospitality Management

**Only the health option is available in Timaru.*

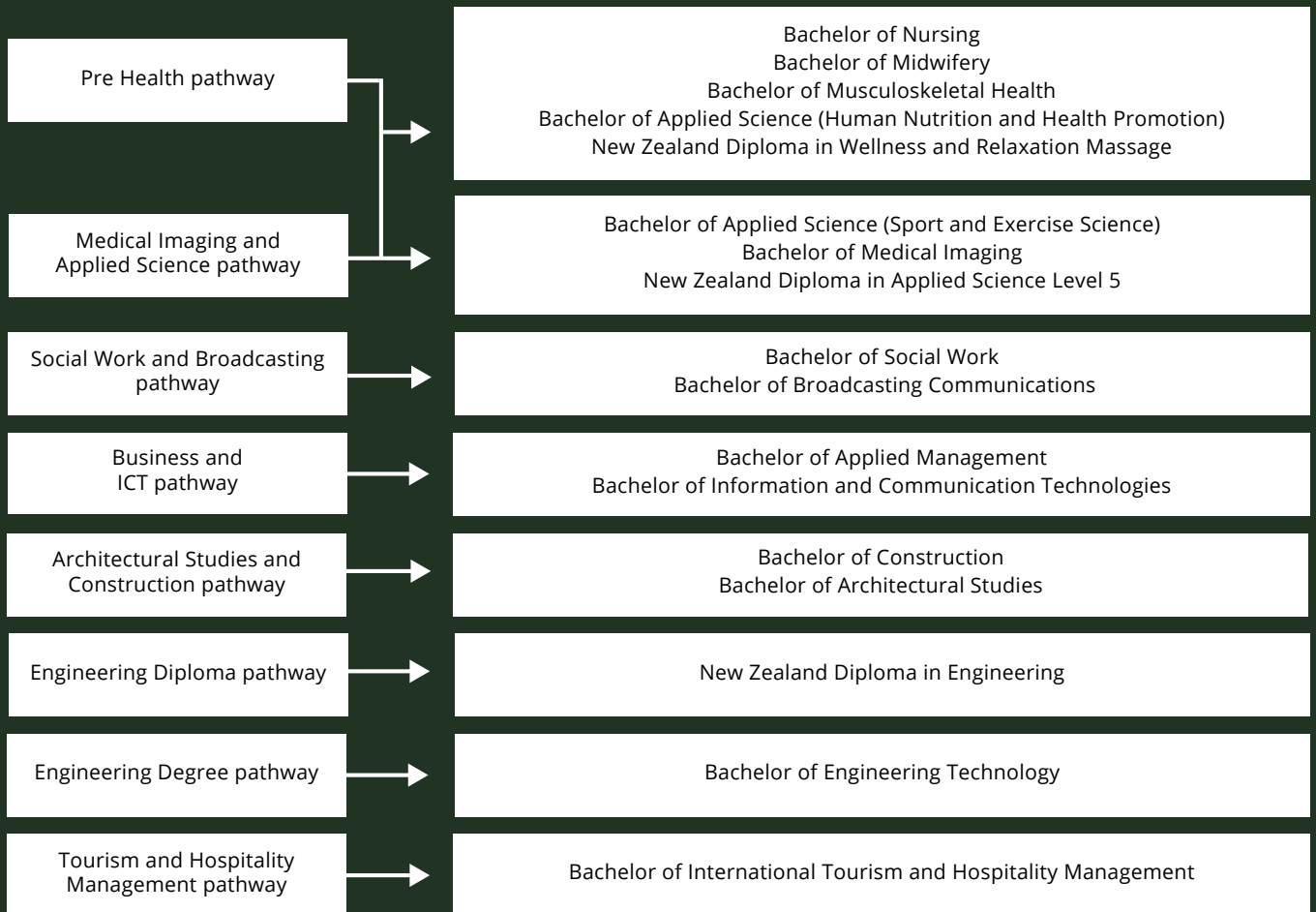
Refer to the diagrams on the following pages to see how you can pathway into your chosen qualification with the New Zealand Certificate in Study and Career Preparation.

New Zealand Certificate in Study and Career Preparation

Level 3 pathways



Level 4 pathways



Reading and Writing for Adult Learners



Level 3 and Level 4



Christchurch



Full-time: 19 weeks



Various

Improve your reading, writing and spelling for employment or further study.

If you or someone you know struggles with reading and writing, this course can really help. It covers reading for enjoyment and purpose, writing basic sentences, learning new ways to spell correctly and how to recognise basic spelling errors.



Create an awesome life for you and your whānau

Our free He Toki Māori or Pacific Trades Training courses are designed to lead to apprenticeships and job opportunities. You'll grow your understanding of your culture while gaining in-demand skills for employment, and you'll receive wrap-around support to ensure you succeed.

Find out more at ara.ac.nz
or call 0800 24 24 76

Ara Connect

Grow your computing skills for free.

Our free Ara Connect courses are a great way to build your digital capability for work, study and everyday life. At locations around Christchurch and Canterbury, you can learn how to use devices like smart phones and tablets, and gain skills in common software programs. Plus, you can study at your own pace and fit your learning around work, family and other commitments.

Courses include:

- Access for Beginners
- Access Enhanced
- Becoming a Digital Citizen
- Digital Basics
- Excel for Beginners
- Excel Enhanced
- Google Apps – Tips and Tricks
- Google for the Office
- Google Sites
- Keyboarding
- New Zealand Certificate in Computing
- PowerPoint for Beginners
- Publisher for Beginners
- Word for Beginners
- Word Enhanced



Visit ara.ac.nz for all entry requirements and fee information.

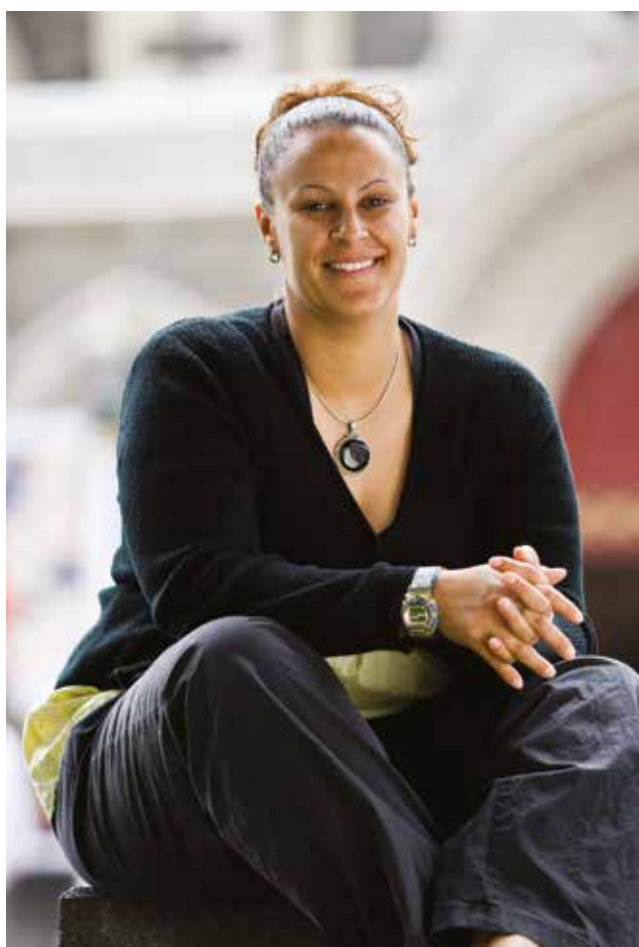
Next Step Centre for Women

Grow your sense of self-worth and expand your possibilities.

Our Next Step Centre for Women provides a friendly, warm and supportive environment where you can learn new skills and develop your potential. Our courses will assist you to know yourself better, explore your options, update your skills and develop confidence in yourself.

Courses include:

- Assertive Communication and Confidence
- Effective Anger Management for Women
- New Outlook for Women
- New Zealand Certificate in Foundation Skills (Updating Skills)
- Self-Empowerment for Women
- Self Esteem
- Self-Development
- Updating Skills



“Not only did I get to hear about the hardships of others, I was able to feed off their strength, encouragement and support to continue this journey on which I had embarked.”

Leisa, Next Step Centre for Women

Short courses

Add to your personal or professional toolkit.

We offer part-time short courses and workshops in a variety of subjects for personal interest or professional development. These range from hobby courses through to micro-credentials required for professional accreditation.

Here's a sample of the short courses we offer:

- Amazon Web Services
- Barista Essentials
- Business Accelerator
- Conflict Resolution
- Database Design and Administration
- Electrical Inspector Registration
- Furniture Making
- Innovation Accelerator
- Liquor Licence Controller Qualification
- Quality Assurance
- Te Reo Māori
- Weekend Panelbeating
- Welding
- Workplace Assessment for Educators



To learn more about our starter and pathway options, call 0800 24 24 76.



Visit ara.ac.nz for all entry requirements and fee information.

Apply now for 2024

ara.ac.nz

info@ara.ac.nz

0800 24 24 76

City campus

130 Madras Street, Christchurch
Mon–Thu, 8am–5pm | Fri, 9am–4.30pm

Manawa campus

276 Antigua Street, Christchurch
Mon–Fri, 8.30am–4.30pm

Woolston campus

Ensors Road, Christchurch
Mon–Thu, 8am–5pm | Fri, 9am–4.30pm

Timaru campus

32 Arthur Street, Timaru
Mon–Thu 8am–5pm | Fri 8am–4.30pm

Ashburton campus

37 Alford Forest Road, Ashburton
Mon–Fri, 8am–4.30pm

Oamaru campus

44 Humber Street, Oamaru
Mon–Fri, 9am–3pm

Ara Connect

City campus, Madras Street, Christchurch
Timaru Campus, 32 Arthur Street, Timaru
Woolston Campus, Ensors Road, Christchurch

